

STANDARD ARRIVAL
CHART - INSTRUMENT
(STAR) - ICAO

TRANSITION ALTITUDE
10000 FT

ALMATY APPROACH 118.3
ALMATY RADAR 126.8
ALMATY TOWER 119.4
ALMATY ATIS (EN) 129.8
ALMATY ATIS (RU) 135.1

(RNAV 1 STAR BASED ON GNSS)
BEKRO 12, EKLAT 12, TUKTO 12

ALMATY
RWY 23R/ 23L

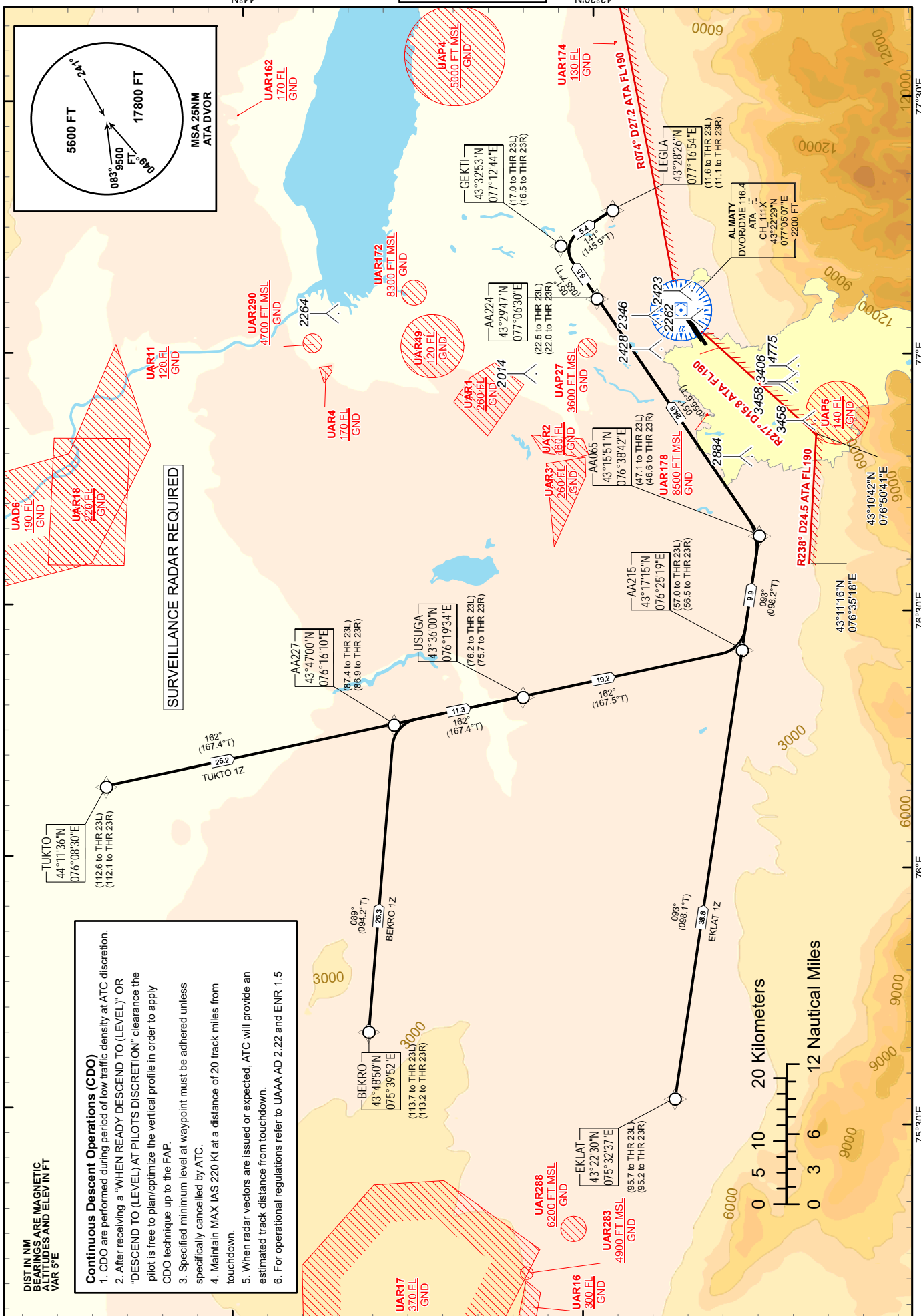
CHANGE: APP FREQ, editorial.

DIST IN NM
BEARINGS ARE MAGNETIC
ALTITUDES AND ELEV IN FT
VAR 5°E

Continuous Descent Operations (CDO)

1. CDO are performed during period of low traffic density at ATC discretion.
2. After receiving a "WHEN READY DESCEND TO (LEVEL)" OR "DESCEND TO (LEVEL) AT PILOTS DISCRETION" clearance the pilot is free to plan/optimize the vertical profile in order to apply CDO technique up to the FAP.
3. Specified minimum level at waypoint must be adhered unless specifically cancelled by ATC.
4. Maintain MAX IAS 220 Kt at a distance of 20 track miles from touchdown.
5. When radar vectors are issued or expected, ATC will provide an estimated track distance from touchdown.
6. For operational regulations refer to UAAA AD 2.22 and ENR 1.5

SURVEILLANCE RADAR REQUIRED



TABULAR DESCRIPTION											
EKLAT 1Z											
Serial Number	Path Descriptor	Waypoint Identifier	Fly - over	Course °M(°T)	Magnetic Variation(°)	Distance NM	Turn Direction	Altitude FT	Speed KT	VPA (°)	Navigation Specification
10	IF	EKLAT	-		5.12	0	-	+FL220/-FL350	315	-	RNAV1
20	TF	AA215	-	93(98.1)	5.12	38.8	-	+FL140/-FL220	280	-	RNAV1
30	TF	AA065	-	93(98.2)	5.12	9.9	R	+11000/-FL180	280	-	RNAV1
40	TF	AA224	-	51(55.6)	5.12	24.6	L	+7100/-9800	250	-	RNAV1
50	TF	GEKTI	-	51(55.7)	5.12	5.5	L	+5900/-7900	230	-	RNAV1
60	TF	LEGLA	-	141(145.9)	5.12	5.4	R	+5000/-6000	230	-	RNAV1

WAYPOINT LIST		
EKLAT 1Z		
Waypoint Identifier	Coordinates	
EKLAT	432230.00N	0753237.00E
AA215	431714.83N	0762518.51E
AA065	431550.67N	0763842.35E
AA224	432947.20N	0770629.91E
GEKTI	433253.40N	0771244.40E
LEGLA	432825.52N	0771654.27E

TABULAR DESCRIPTION											
TUKTO 1Z											
Serial Number	Path Descriptor	Waypoint Identifier	Fly - over	Course °M(°T)	Magnetic Variation(°)	Distance NM	Turn Direction	Altitude FT	Speed KT	VPA (°)	Navigation Specification
10	IF	TUKTO	-		5.12	0	-	+FL260/-FL410	315	-	RNAV1
20	TF	AA227	-	162(167.4)	5.12	25.2	-	+FL200/-FL330	280	-	RNAV1
30	TF	USUGA	-	162(167.4)	5.12	11.3	R	+FL180/-FL290	280	-	RNAV1
40	TF	AA215	-	162(167.5)	5.12	19.2	R	+FL140/-FL220	280	-	RNAV1
50	TF	AA065	-	93(98.2)	5.12	9.9	L	+11000/-FL180	280	-	RNAV1
60	TF	AA224	-	51(55.6)	5.12	24.6	L	+7100/-9800	250	-	RNAV1
70	TF	GEKTI	-	51(55.7)	5.12	5.5	L	+5900/-7900	230	-	RNAV1
80	TF	LEGLA	-	141(145.9)	5.12	5.4	R	+5000/-6000	230	-	RNAV1

WAYPOINT LIST		
TUKTO 1Z		
Waypoint Identifier	Coordinates	
TUKTO	441136.00N	0760830.00E
AA227	434700.39N	0761610.1E
USUGA	433600.00N	0761934.00E
AA215	431714.83N	0762518.51E
AA065	431550.67N	0763842.35E
AA224	432947.20N	0770629.91E
GEKTI	433253.40N	0771244.40E
LEGLA	432825.52N	0771654.27E

TABULAR DESCRIPTION											
BEKRO 1Z											
Serial Number	Path Descriptor	Waypoint Identifier	Fly - over	Course °M(°T)	Magnetic Variation(°)	Distance NM	Turn Direction	Altitude FT	Speed KT	VPA (°)	Navigation Specification
10	IF	BEKRO	-		5.12	0	-	+FL260/-FL410	315	-	RNAV1
20	TF	AA227	-	89(94.2)	5.12	26.3	-	+FL200/-FL330	280	-	RNAV1
30	TF	USUGA	-	162(167.4)	5.12	11.3	R	+FL180/-FL290	280	-	RNAV1
40	TF	AA215	-	162(167.5)	5.12	19.2	R	+FL140/-FL220	280	-	RNAV1
50	TF	AA065	-	93(98.2)	5.12	9.9	L	+11000/-FL180	280	-	RNAV1
60	TF	AA224	-	51(55.6)	5.12	24.6	L	+7100/-9800	250	-	RNAV1
70	TF	GEKTI	-	51(55.7)	5.12	5.5	L	+5900/-7900	230	-	RNAV1
80	TF	LEGLA	-	141(145.9)	5.12	5.4	R	+5000/-6000	230	-	RNAV1

WAYPOINT LIST		
BEKRO 1Z		
Waypoint Identifier	Coordinates	
BEKRO	434850.00N	0753952.00E
AA227	434700.39N	0761610.10E
USUGA	433600.00N	0761934.00E
AA215	431714.83N	0762518.51E
AA065	431550.67N	0763842.35E
AA224	432947.20N	0770629.91E
GEKTI	433253.40N	0771244.40E
LEGLA	432825.52N	0771654.27E